

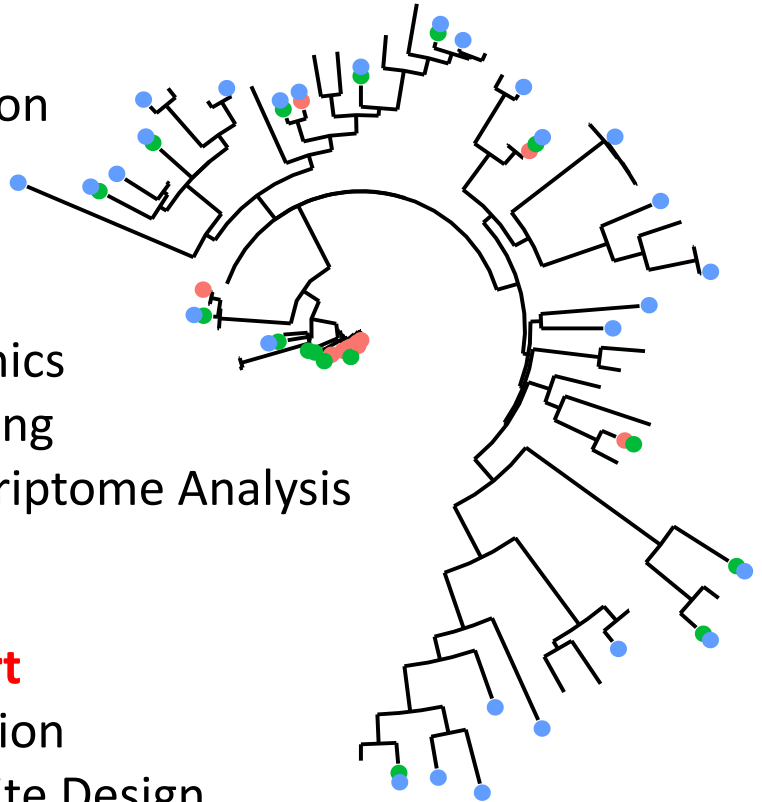


## BIONFORMATICS CONSULTING SERVICE CORE

The **Bioinformatics Consulting and Service Core (BCSC)** offers expertise in the analysis of data related to life sciences research. It is our goal to create a collaborative relationship that will provide you with analytical and computational support.

### Analysis Support

- Differential Expression
- Quality Assessment
- Metabolomics
- Metagenomics
- Comparative Genomics
- GWAS and Genotyping
- Genome and Transcriptome Analysis
- ...and more!



### Computational Support

- Workflow Optimization
- Database and Website Design
- High-Performance Computing Support

Initial consultation, grant support and budget-lines provided free of charge. Cost estimates for other work will be given after initial consultation.

### Contact Information

Dr. Elizabeth H. Scholl (Betsy)

[ehscholl@ncsu.edu](mailto:ehscholl@ncsu.edu)

